

Ball valves

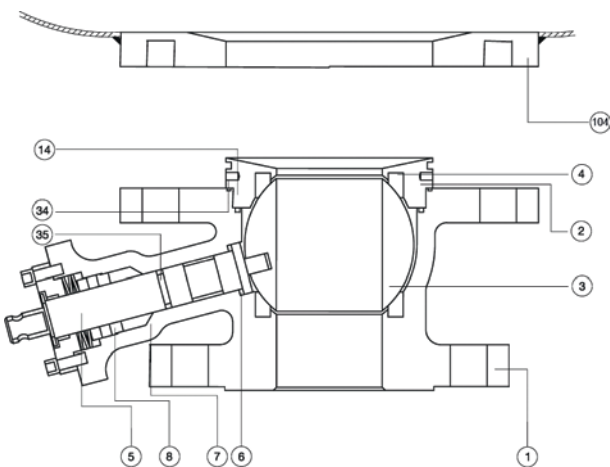
Tank Bottom

Tank bottom valve with inclined stem

Design advantages

- Minimal distance between the ball and the tank bottom.
- Inclined stem design eases the assembly of operating and ancillary elements.
- Can be supplied with heating jacket.
- Special materials upon request.
- Can be supplied with fire safe construction.
- Can be supplied with metal seat (high temperature & abrasive fluid service).

Standard construction materials



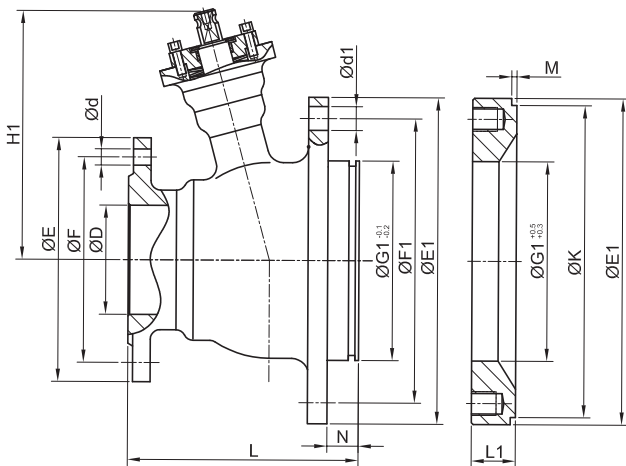
ITEM	DESCRIPTION	QTY.	FIG. ZI56TTTW	FIG. ZMVI56CTTW
1	Body	1	1.4408	1.4408
2	Insert	1	1.4401	1.4401
3	Ball	1	1.4408	1.4408 + Cr. Carbide
4	Seat	2	PTFE	1.4401 + Cr. Carbide
5	Stem	1	1.4401	GRAPHITE
6	Stem seal	1	PTFE + F.G	PTFE + F.G
7	Stem packing	1	PTFE	PTFE
8	Gland packing	1	1.4401	1.4401
14	Body Seal 1	1	PTFE	PTFE
34	Body seal	1	FKM	FKM
35	O-ring stem	1	FKM	FKM
104	Tank	1	1.4401	1.4401



Tank bottom valve with inclined stem

Dimensions:

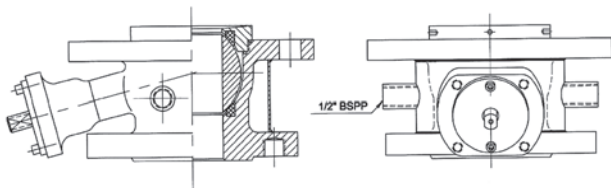
DN	FLANGE to TANK	PN	Standard	E	F	n x d	L	N	E1	F1	G1	n x d1	H1	M	L1	K
40	DN65	16	Pekos Design	150	110	4 x 18	116	20	185	145	104	8 x 18	136	3	25	180
50	DN80	16	DIN 28140	165	125	4 x 18	116	20	200	160	94	8 x 18	141	3	25	195
65	DN100	16	Pekos Design	185	145	8 x 18	133	20	220	180	124	8 x 18	151	3	25	215
80	DN100	16	DIN 28140	200	160	8 x 18	144	25	220	180	129	8 x 18	179	3	30	215
80	DN125	16	Pekos Design	200	160	8 x 18	144	25	250	210	146	8 x 18	179	3	30	245
100	DN150	16	DIN 28140	220	180	8 x 18	169	25	285	240	179	8 x 22	192	3	30	280
125	DN200	16	Pekos Design	250	210	8 x 18	259	30	340	295	215	12 x 22	239	5	35	332
150	DN200	10	DIN 28140	285	240	8 x 22	281	30	340	295	233	8 x 22	257	5	35	332
200	DN250	10	DIN 28140	340	295	8 x 22	330	50	395	350	278	12 x 22	348	5	55	387
250	DN300	10	DIN 28140	395	350	12 x 22	390	50	445	400	328	12 x 22	374	5	55	437



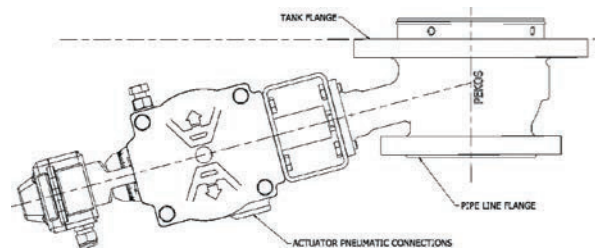
Automation Values

DN=D	FLANGE to TANK	PN	ZI56 TTTW		ZMVI56 CGGG-		ISO 5211
			TORQUE (Nm)	MAST (1.4401)	TORQUE (Nm)	MAST (XM-19)	
40	DN 65	PN16	31	250	61	464	F07
50	DN 80	PN16	46	250	96	464	F07
65	DN 100	PN16	55	250	116	464	F07
80	DN 100	PN16	85	522	170	968	F10
80	DN 125	PN16	85	522	170	968	F10
100	DN 150	PN16	110	522	210	968	F10
125	DN 200	PN16	240	1073	463	1989	F12
150	DN 200	PN10	350	1073	740	1989	F12
200	DN 250	PN10	500	2544	1055	4716	F14
250	DN 300	PN10	890	2544	1670	4716	F14

With heating jacket



With Actuator + Limit Switch Assembly



www.pekos.es



Rec del Molinar, 9 - P.I. El Circuit - 08160 Montmeló (Barcelona) - Spain
 Tel.: (+34) 93 568 92 56
 pekos@pekos.es

